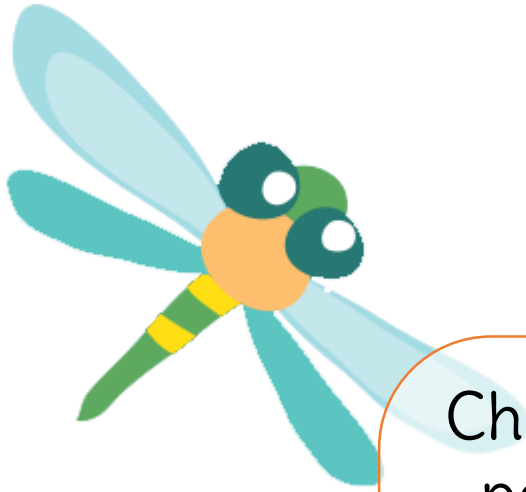


EYFS Forest School Curriculum





Children in the Early Years Foundation Stage at Manor Hill participate in a Forest School session at least once each week.

With a wonderful woodland on the school grounds the children are able to access the natural environment in all seasons and weathers, allowing them to develop a relationship with the natural world.



Forest School Early Explorers Autumn Term

Rules and Routines

We will learn and recite our two rules of Forest School

- We always listen
- We never put anything into our mouths not even our fingers

Vocabulary

Oak Tree
Acorn
Bramble
Blackberries
Crunchy
Windy
Autumn
Resilient
Wet
Frosty
Icy
Leaf/Leaves
Autumn
Discover
Imagination

Health and Self Care

With help we will put on and take off our puddle suits and wellington boots.

We will independently wash our hands thoroughly once we have changed and returned to class.

Activities

Mud play
Blackberry picking
and painting
Grass Party
Leaf Party
Autumn leaf hats
Den Building
Weaving with
natural objects
Bark Rubbings
Natural
Construction
Cooking on an open
fire (Adult and child
1-1 or 1-2 ratio)
Woodland Walks

Outcomes

We will look for autumnal and winter changes
We will access and experience the outdoors in all weathers.
We will respect the natural world around us.
We will explore, discover and initiate our own learning taking manageable risks.
We will develop our movement and balancing.

Bright Beginners will access the Forest School environment in an immersive and exploratory way, taking part in activities should they wish to.

Forest School Early Explorers Spring Term

Rules and Routines

We will learn and recite our two rules of Forest School

- We always listen
- We never put anything into our mouths not even our fingers

Vocabulary

Caterpillar
Cocoon
Butterfly
Spider
Spring
Dandelions
Bluebells
Buds
Daffodils
Splash
Squelch
Catkins
Ivy
Goose Grass
Nettles

Health and Self Care

With help we will put on and take off our puddle suits and wellington boots.

We will independently wash our hands thoroughly once we have changed and returned to class.
We will independently take off our wellingtons and puddle suits

Activities

Mud play
Den Building
Cooking on an open fire (Adult and child 1-1 or 1-2 ratio)
Woodland Walks
Hide and Seek
Making animal habitat's/bug hotels
Potions Laboratory
Clay Play
Off the floor
Preparing a vegetable patch.

Outcomes

We will observe winter and spring changes.
We will develop our own ideas when choosing materials to create.
We will begin to use a wider range of vocabulary to talk about what we see.
We will begin to understand the need to respect and care for the natural environment
We will begin to take part in group activities
We will develop our physical skills.
During free play we will begin to work with our friends extending play using our interests to support this.

Bright Beginners will access the Forest School environment in an immersive and exploratory way, talking part in activities should they wish to.

Forest School Early Explorers Summer Term

Vocabulary

Push
Pull
Melt
Explode
Toast
Fire Steel
Paracord
Dock leaf
Meadow
Woodland Axe
Bow Saw
Loppers.
Nettle
Branch
Twig
Stick
Warmth

Rules and Routines

We will learn and recite our two rules of Forest School

- We always listen
- We never put anything into our mouths not even our fingers
- We will not always need an adult to remind us of the rules.

Health and Self Care

With help we will put on our puddle suits and wellington boots.

We will independently wash our hands thoroughly once we have changed and returned to class.
We will independently take off our wellingtons and puddle suits.

Activities

Mud play
Den Building
Shelter building
Cooking on an open fire (Adult and child 1-1 or 1-2 ratio)
Popcorn and Toast
Woodland Walks
Hide and Seek
Demonstration of Tools
Knot Tying
Cloud Gazing
Mini Beast Hunt
Picnic
Looking after the vegetable patch

Outcomes

We will observe spring and summer changes.
During play we will be able to make suggestions and find solutions to help avoid conflict and rivalry.
We will begin to show understanding of Why questions.
During play we will use talk to organise ourselves.
Using a variety of resources we will make complex and imaginative small worlds.
We will explore and talk about different forces we can feel.
Through fire pit cooking we will discuss materials and how they can change.
We will be able to collaborate with others to manage tasks and access suitable resources to achieve this.

Bright Beginners will access the Forest School environment in an immersive and exploratory way, talking part in activities should they wish to.

Forest School Reception Autumn Term

Vocabulary

Harvest
Blustery
Deciduous
Fungi
Crisp
Oak Tree
Sycamore Tree
Kernel/Nut
Cupule
Season
Chilly
Bleak
Glistening
Bulbs
Shoot
Nocturnal
Bow Saw
Loppers
Woodland Axe

Rules and Routines

We will get to know our Forest School Field and understand the rules we need to follow

- We always listen
- We never put anything into our mouths not even our fingers

Health and Self Care

We will independently put on and take off our puddle suits and wellington boots.

We will independently wash our hands thoroughly once we have changed and returned to class.

Activities

Mud play
Grass Party
Leaf Party
Den and Shelter
Building
Natural
Construction
Cooking on an open fire (Adult and child 1-1 or 1-2 ratio)
Woodland Walks
Planting bulbs
Autumnal Art
Animal Footprint
Tunnels
Bird Feeders
Demonstrated Tool
Work

Outcomes

We will learn about autumnal and winter changes
We will access and experience the outdoors in all weathers.

We will respect the natural world around us.

We will explore, discover and initiate our own learning taking manageable risks.

We will identify an oak and sycamore tree.

We will learn how to plant bulbs.

We will explore colour and texture in the natural world.

We will develop our strength and balance and move in lots of different ways.

We will respond by asking questions and making comments.

We will learn about Nocturnal animals.

Forest School Reception Spring Term

Vocabulary

Spring
Winter
Life Cycle
Mini Beast
Planting
Sowing
Para cord
Butterfly Life
Cycle
Beetle
Lime Tree
Male and
Female Catkins
Alder Tree
Bow Saw
Loppers
Woodland Axe

Rules and Routines

We will know our Forest School Field and understand the rules we need to follow

- We always listen
- We never put anything into our mouths not even our fingers

Health and Self Care

We will independently put on and take off our puddle suits and wellington boots.
We will independently wash our hands thoroughly once we have changed and returned to class.

Activities

Mud play
Den and Shelter
Natural Construction
Cooking on an open fire (Adult and child 1-1 or 1-2 ratio) –pancakes, hot chocolate,
Woodland Walks
Potato Peel Whittling
Looking after the school garden
Making Bug Hotels
Knot tying
Rope Swings
Tool Demonstrations
Assisted Tool Work
Bark Rubbings

Outcomes

We will learn about winter and spring changes.
We will notice what happens to some plants and animals during winter and spring.
We will learn about life cycles of some mini beasts.
We will learn how to grow vegetables and where in world our food comes from.
We will access and experience the outdoors in all weathers.
We will respect the natural world around us.
We will explore, discover and initiate our own learning taking manageable risks.
We will identify an Alder Tree and a Lim Tree.
We will start to become independent learners and not give up when we face a challenge.
We will develop our strength and balance and coordination.

Forest School Reception Summer Term

Vocabulary

Spring
Summer
Heat
Safety
Overhand Knot
Stopper Knot
Loops
Fire Steel
Woodland Axe
Bow Saw
Loppers
Footprints
High
Low
Growth
Hydrate
Habitat
Nest
Hole
Dark

Rules and Routines

We will continue following Forest School rules and understand why these are important.

- We always listen
- We never put anything into our mouths not even our fingers

Health and Self Care

With help we will change from our uniform to Forest School clothes.

We will independently put on and take off our puddle suits and wellington boots.

We will independently wash our hands thoroughly once we have changed and returned to class.

Activities

Mud play
Shelter Building
Natural Construction
Cooking on an open fire
(Adult and child 1-1 or 1-2 ratio) hot dogs
Woodland Walks
Looking after the school garden
Knot tying- making ladders
Rope Swings
Assisted Tool Work
Forge to make birds nests
Revisit Animal Track
Tunnels
Climbing Trees
Bug Hotel Investigation
Assisted Fire Steel
Lighting

Outcomes

We will learn about spring and summer changes.

We will set goals and try our best to achieve these.

We will be confident to try new activities, show independence and resilience when facing a challenge. We give focused attention and follow instructions.

We will be aware of others whilst we are moving and climbing.

We will develop our strength, balance and coordination.

We will use a wide variety of natural materials to construct and model, for a purpose.

We will use paracord to join. We will use tools assisted with an adult.

We will learn about different animal habitats.